



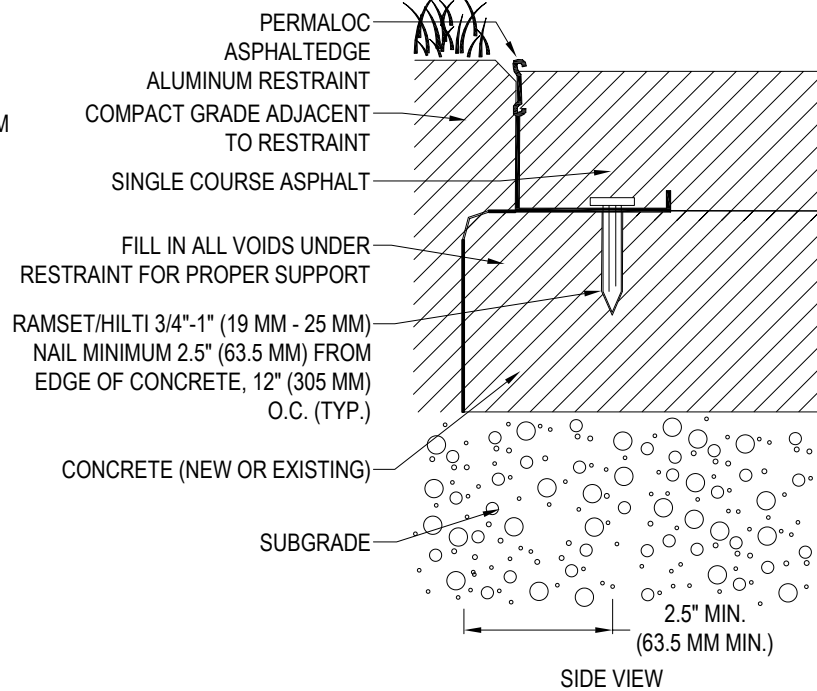
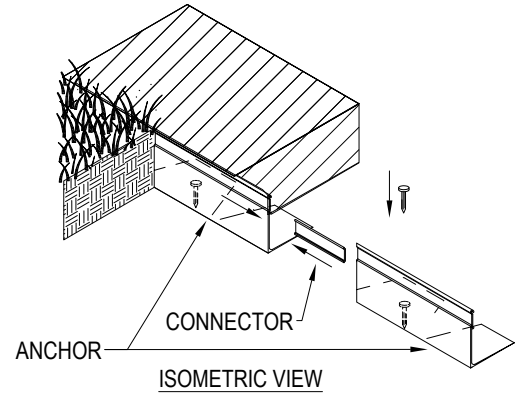
PERMALOC CORPORATION
13505 BARRY ST
HOLLAND, MI 49424
TOLL FREE: 1-800-356-9660
PHONE: (616) 399-9600
FAX: (616) 399-9770
www.permaloc.com

☒ SELECT DESIRED SIZE (IN 8' (2.44 M) LENGTHS
WITH .21" (5.33 MM) THICK EXPOSED TOP LIP):

- ☐ 1" X 2.25" (25 MM X 57 MM)
- ☐ 1.5" X 2.25" (38MM X 57 MM)
- ☐ 2" X 2.25" (51 MM X 57 MM)
- ☐ 2.5" X 2.25" (64 MM X 57 MM)
- ☐ 3" X 3" (76 MM X 76 MM)
- ☐ 4" X 3" (102 MM X 76 MM)
- ☐ 5" X 3" (127 MM X 76 MM)
- ☐ 6" X 3" (152 MM X 76 MM)

☒ SELECT DESIRED FINISH:

- ☐ MF - MILL FINISH-NATURAL ALUMINUM
- ☐ BL - BLACK DURAFLEX -
ELECTROSTATICALLY APPLIED
BAKED ON PAINT, MEETS AAMA 2603

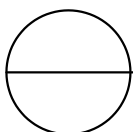


NOTES:

2. 8'-0" (2.44 M) SECTIONS CONNECTED WITH 4" (102 MM) SLIDING CONNECTOR.
3. MAINTAIN 3/8" (9.5 MM) GAP BETWEEN SECTIONS TO ALLOW FOR PRODUCT EXPANSION IN EXTREME TEMPERATURES.
4. CORNERS: NOTCH BASE ONLY AND FORM A CONTINUOUS CORNER.
5. PERMALOC ASPHALTEGE AS MANUFACTURED BY PERMALOC CORPORATION.

NOTES:

1. INSTALLATION TO BE COMPLETED IN ACCORDANCE WITH MANUFACTURER'S SPECIFICATIONS.
2. DO NOT SCALE DRAWING.
3. THIS DRAWING IS INTENDED FOR USE BY ARCHITECTS, ENGINEERS, CONTRACTORS, CONSULTANTS AND DESIGN PROFESSIONALS FOR PLANNING PURPOSES ONLY. THIS DRAWING MAY NOT BE USED FOR CONSTRUCTION.
4. ALL INFORMATION CONTAINED HEREIN WAS CURRENT AT THE TIME OF DEVELOPMENT BUT MUST BE REVIEWED AND APPROVED BY THE PRODUCT MANUFACTURER TO BE CONSIDERED ACCURATE.
5. CONTRACTOR'S NOTE: FOR PRODUCT AND COMPANY INFORMATION VISIT www.CADdetails.com/info AND ENTER REFERENCE NUMBER 006-058



ASPHALTEGE ALUMINUM ASPHALT RESTRAINT

RESTRAINING FINISH COURSE OF ASPHALT OVER CONCRETE BASE CAD FILES AE-4